

## Stage FS

Floorstands for JBL Stage 240B and 250B Bookshelf Loudspeakers

JBL



### Product Overview

Designed and engineered in our world-famous Acoustic Engineering Center of Excellence in Northridge, California, Stage FS floorstands are the perfect accessory for the JBL 250B and 240B bookshelf loudspeakers. Designed to position the loudspeakers at the optimal listening height, the FS provides a stable foundation for great sound. The design perfectly complements the appearance of the Stage 2 models and integrated cable management clips keep things neat and tidy when installed.

Available in Espresso or Latte .

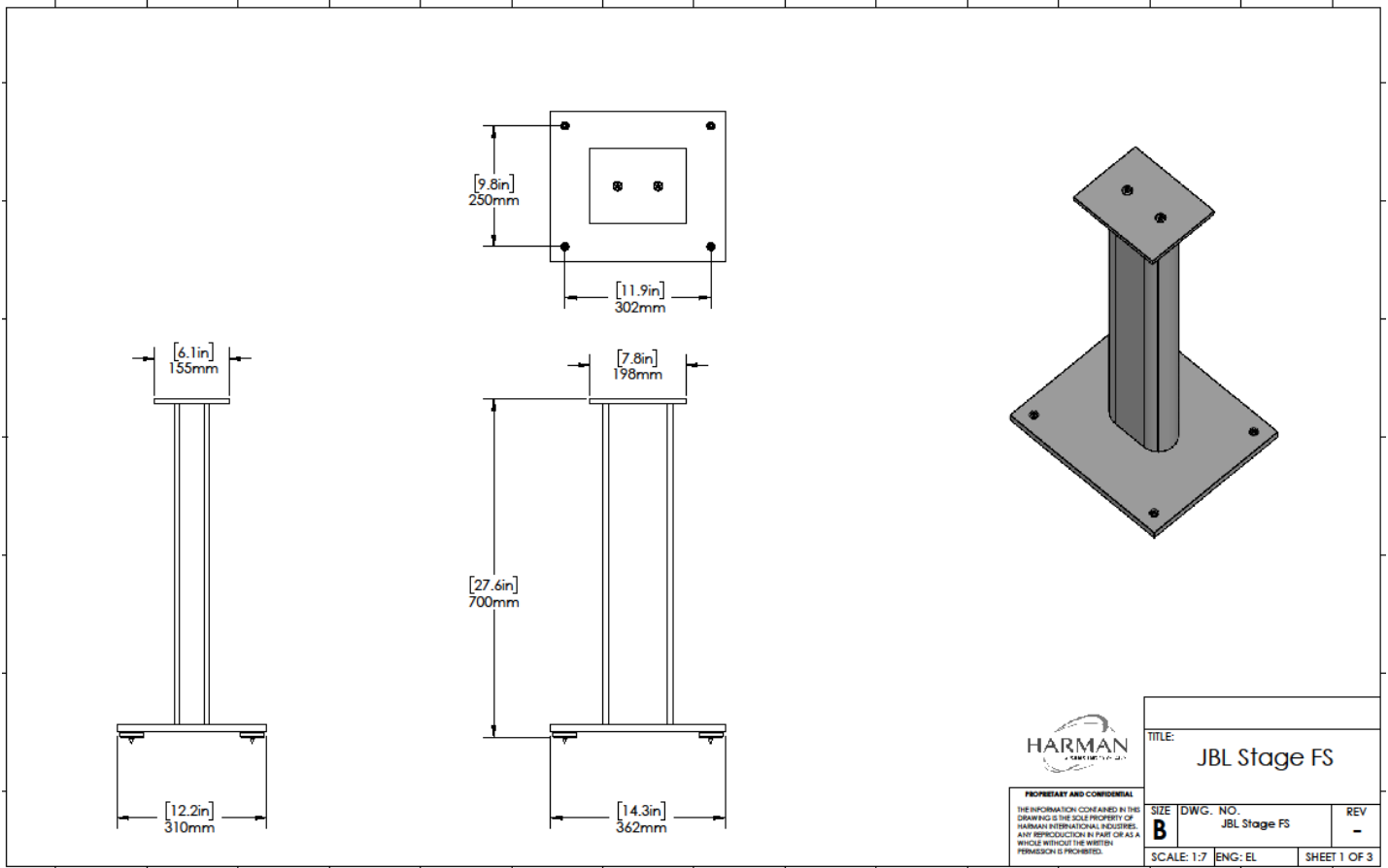
### Highlights

- Designed to Complement the Stage 2 Series 240B and 250B Bookshelf Loudspeakers
- 27.8-inch Tall: Positions the Loudspeaker at the Optimal Listening Height
- Integrated Plinth with Optional Carpet Spikes
- Integrated Cable Management Clips

# Specifications

Type:	Floorstand
Finish:	Espresso or Latte
Dimensions (HxWxD):	27.8in x 12.2in x 14.25in (706mm x 310mm x 362mm)
Product Weight:	10.7 lbs. (4.9kg)
Shipping Weight:	24.6 lbs. (11.2kg)
Shipping Units of Measure:	Pair

# Dimensions



**HARMAN**  
A HARMAN INTERNATIONAL COMPANY

THE INFORMATION CONTAINED IN THIS DRAWING IS THE SOLE PROPERTY OF HARMAN INTERNATIONAL INDUSTRIES. ANY REPRODUCTION IN PART OR AS A WHOLE WITHOUT THE WRITTEN PERMISSION IS PROHIBITED.

TITLE: JBL Stage FS		
SIZE: B	DWG. NO.: JBL Stage FS	REV: -
SCALE: 1:7	ENG: EL	SHEET 1 OF 3